

AdventHealth Cancer Institute Waterman

2021 Annual Outcomes Report





AdventHealth Waterman is proud to present our 2021 Annual Outcomes Report, including 2021 activities and 2020 Cancer Registry data.

Table of Contents

2	Comprehensive Cancer Committee Chair Message	15	Prostate
4	Vision	16	Stage at Diagnosis
4	About the Cancer Institute	16	Summary Stage at Diagnosis
5	Summary of Services	17	Age at Diagnosis
6	Cancer Care Navigators	18	Diagnosis by Race
6	Radiation Oncology	18	Diagnosis by Gender
7	Medical Oncology	18	Diagnosis and Treatment Center
7	Clinical Trials	19	Monitoring Quality of Care
7	Oncology Nursing	19	Return to Screening Initiative
8	Rehabilitation	20	Patient Support
8	Nutritional Care	20	Psychosocial Services
8	Financial Counseling	20	Support Groups
8	Tumor Board	20	Community Outreach
8	Cases Reviewed at Tumor Board	23	American Cancer Society Partnership
9	Cancer Registry	22	Florida Breast and Cervical Cancer Early Detection Program Partnership
9	Cancer Registry Data: 2020	24	Philanthropy
9	Total Cancer Patients: Three-Year Trend	24	2021 Contributions and Distributions
10	Primary Tumor Sites	25	2021 Cancer Committee Members
12	Ten Most Commonly Diagnosed Cancers	26	For More Information
13	Breast		
14	Bladder		
14	Colon		
15	Lung		

Comprehensive Cancer Committee Chair Message

Dear Patients, Community Members and Colleagues:

In 2021, AdventHealth Cancer Institute Waterman continued its journey to advance cancer care in Lake County. Below are some of our achievements and activities in the past year:

New Technology

- A new Siemens 64-slice CT scanner was added for more accurate radiation treatment.
- Added prone breast irradiation to improve patient comfort and minimize radiation dose to normal tissues during treatment.

New Team Members



Dr. Justin Wu



Dr. Christopher Keeler



Fei Duan, MS, DABR



Kristen Bay, RN

- A second radiation oncologist, Dr. Justin Wu, joined in January.
- General surgeon, Dr. Christopher Keeler, joined the Breast Care Team in August.
- A new physicist, Fei Duan, joined the radiation oncology treatment team.
- A second radiation nurse, Kristen Bay, RN, joined the radiation care team.
- A second Certified Tumor Registrar, Marjorie Sneed-Owens, was added to support the Tumor Registry.

Facilities

- The Cancer Center chapel, entryway and garden were refurbished with a healing environment.

Mission

- Mammogram screenings were provided to underserved patients through funding from the AdventHealth Waterman Foundation, and the Florida Breast and Cervical Cancer Early Detection Program.
- Radiation therapist, Kathie Jarmusz, received the Waterman Whole Heart Award for providing outstanding compassionate patient care.
- The Radiation Oncology department hosted a dosimetry program applicant who shadowed our dosimetrist, Jeremy Gamble. The applicant was subsequently accepted into a dosimetry program.

Clinical Care

- Strengthened our clinical care pathways for melanoma and skin cancer patients.
- Increased the number of Low Dose CT Screenings performed -- for early detection of lung cancer.
- Increased the number of colon cancer cases reviewed at Tumor Board for improved multi-disciplinary care. Implemented a process for newly diagnosed rectal cancer patient cases to be reviewed at AdventHealth Orlando's NAPRC (National Accreditation Program for Rectal Cancer) tumor board for improved care of these patients – at least one case per month was reviewed there under Dr. Justin Kelly's guidance.
- Improved access to insurance coverage for uninsured patients so they could begin chemotherapy treatment within 1 month or less from time of diagnosis.
- The percentage of newly diagnosed breast cancer patients who received consults from Waterman's multi-disciplinary physician team before first treatment increased from 70% in 2020 to 93% in 2021.
- Through the unique "Passport" process at AdventHealth Cancer Institute Waterman, cancer patients are supported by several dedicated team members, including a nurse navigator, referral coordinator, social worker, triage nurse, in-take representative, and financial assistance and insurance authorization coordinator.

These and many other activities demonstrate the dedication of our cancer team in achieving our vision to provide comprehensive, quality care.

In partnership with our physicians, the community and donors, we will continue to focus on our commitment to providing the highest quality, state-of-the-art cancer care close to home for members of our community.

Regards,

Borys Mascarenhas, MD

Chair, 2021 Comprehensive Cancer Committee
Medical Director of Cancer Clinical Quality
Breast Program Medical Director



Vision

Since its establishment in 1938, AdventHealth Waterman has been a leading provider of health care in Central Florida. The AdventHealth Cancer Institute Waterman continues to expand its services, offering the growing Lake County population easy access to the latest

About The Cancer Institute

From diagnosis to recovery, AdventHealth Cancer Institute Waterman offers innovative state-of-the-art health care. Our oncologists are experts in cancer care, having trained at top medical schools, and in other prominent hospitals and institutions. And through AdventHealth Cancer Institute, we connect Lake County to a network of care that ensures access to additional cancer specialists and technology.

The Cancer Institute is accredited as a Comprehensive Community Cancer Program by the Commission on Cancer of the American College of Surgeons, and our breast program is accredited by the National Accreditation Program for Breast Centers. This means that we meet the highest national standards in comprehensive patient-centered and quality care. At AdventHealth Cancer Institute Waterman, patients can stay close to home — connected to the community — while receiving the latest cancer treatments and therapies.



AMERICAN COLLEGE OF SURGEONS
Inspiring Quality:
Highest Standards, Better Outcomes

100+years



advances in cancer care. Our vision is to grow and enhance oncology services to be recognized as Lake County's leading provider of choice for comprehensive and high quality cancer care.

But state-of-the-art doesn't mean strictly technical. Our physicians and staff are dedicated to caring for each patient with compassion. Our team embraces the AdventHealth service standards that focus on the whole needs of each individual — physical, emotional and spiritual, resulting in a unique health care experience.

AdventHealth Cancer Institute Waterman's patient satisfaction scores are consistently higher than other institutions in the country. In 2021, our cancer patient experience surveys revealed that 97% of patients would recommend AdventHealth Cancer Institute Waterman to friends and family members for cancer care.

The best health care engages the body, mind and spirit, and each contributes to healing. That's why we invest in people and technology, from our state-of-the-art equipment that targets tumors with pinpoint accuracy, to cancer care navigators who provide patients with emotional support to overcome the hurdles during cancer treatment and recovery.

Summary of Services

Comprehensive Cancer Center:

Offering cancer services in one convenient facility

Services & Specialties:

- Chemotherapy/Infusion
- Clinical Research Trials
- Financial Counseling
- Genetic Counseling and Risk Assessment
- Hematology
- Medical Oncology
- Navigation
- Nursing – Inpatient and Outpatient
- Nutritional Counseling
- Oncology Social Work
- Otolaryngology
- Palliative Care
- Pastoral Care
- Pathology
- Patient Support Groups and Education
- Prevention and Screening
- Pulmonology
- Radiation Oncology
- Radiology
- Reconstructive Surgery
- Rehabilitation
- Surgical Oncology/Surgery
- Survivorship Care
- Tumor Registry
- Urology



Cancer Care Navigators



Eileen Bascombe, RN, BSN, ONN-CG
Cancer Care Navigator



Janet Moore, RN, BSN
Cancer Care Navigator



Charissa Wynn, RN, OCN
Cancer Care Navigator

Cancer Care Navigators are specially trained and nationally certified oncology nurses who serve as critical liaisons between patients and their medical team during treatment and recovery. The complimentary services they provide include personalized education and support, assistance with appointment scheduling, follow-up on test results and consultations, and help accessing financial assistance and psychosocial support. In 2021, our Navigators assisted over 500 cancer patients.

Radiation Oncology

AdventHealth Cancer Institute Waterman offers the latest innovations in radiation oncology to ensure patients have access to the safest, most effective radiation care.

The Cancer Institute specializes in advanced High Dose Rate (HDR) Brachytherapy for skin and prostate cancers. Brachytherapy is a minimally invasive method of internal radiotherapy that delivers concentrated doses of radiation while keeping healthy nearby tissues safer. This type of radiation is placed directly into or next to a tumor and allows the radiation oncologist to direct the radiation dose to a smaller area in a shorter timeframe compared to external radiotherapy.

Additional innovative radiation technologies include:

- Image guided radiation therapy (IGRT)
- Intensity modulated radiation therapy (IMRT)
- Deep inspiration breath hold (DIBH) therapy
- Accelerated partial breast irradiation (APBI)
- Prone breast irradiation
- 3D conformal radiation
- Conventional radiation
- Stereotactic body radiotherapy (SBRT)
- Stereotactic radiosurgery (SRS)
- Gated Rapid Arc radiotherapy
- Surface guided radiation therapy (SGRT)
- Space OAR gel

Our new large bore, Dual Energy CT imaging scanner, the Siemens Somatom Definition AS, can perform four-dimensional CT scans to simulate the patient's breathing cycle. This allows the radiation treatment to be provided in a manner that tracks with the patient's respiratory movement, resulting in more accurate treatment to the tumor. In addition, with dual energies, the scanned images are much clearer for both normal tissues and the tumor. This makes it easier for clinicians to distinguish between normal tissue

and the tumor. And for patients with metal implants, such as hip prostheses, dual energy scans can reduce or eliminate the visual on the scans caused by the implants. This results in a radiation dose calculation that is more accurate.

These innovative technologies and others like the TrueBeam™ linear accelerator, a radiotherapy system that uses synchronized imaging and dose delivery to deliver radiation faster with less radiation exposure to the patient, make AdventHealth Waterman a leader in bringing new cancer treatment techniques to Lake County.

Medical Oncology

Medical oncologists at AdventHealth Waterman treat patients using the latest advances in personalized medicine. New medications and procedures have vastly improved quality of care and outcomes in many conditions. Immune therapy, targeted medication and cancer genetic studies have helped provide care locally to numerous patients in the past year. With access to these new advances and a strong relationship with local and national prominent cancer institutions and experts, advanced cutting-edge local care has become a reality.

Clinical Trials

Clinical trials are research studies aimed at evaluating new treatments. Often a clinical trial is used to explore whether a new treatment is more effective and/or has less harmful side effects than the standard treatment. AdventHealth Cancer Institute Waterman gives patients the opportunity to participate in the newest therapies to fight cancer through a variety of clinical trials offered by the local medical oncology providers.

In 2021, 2.5 percent of patients first diagnosed and/or treated at AdventHealth Cancer Institute Waterman were enrolled in clinical trials.

Clinical Trial Enrollment in 2021	
Total Analytic Cases*	766
Total Number of Patients Enrolled in Clinical Trials	19
Percent of Analytic Patients Enrolled in Clinical Trials	2.5 %

* Analytic Cases: Patients diagnosed and/or received their first course of treatment at AdventHealth Cancer Institute Waterman.

Source: AdventHealth Cancer Institute Waterman Cancer Registry

Oncology Nursing

Oncology care at AdventHealth Cancer Institute Waterman is provided by nurses with specialized knowledge and skills in cancer. From diagnosis, initial treatment, surgery and all aspects of cancer care, our nurses are trained in the unique physical and emotional needs of the cancer patient and their family. Nurses must be certified in oncology nursing and/or have specialized knowledge and skills in oncology. In 2021, 43 oncology nurses provided cancer care at Waterman.

In addition, we are addressing the nationwide nursing shortage in new and innovative ways. The Oncology Medical-Surgical inpatient unit is piloting a new program using a Registered Nurse/Licensed Practical Nurse (RN/LPN) staff model. As we grow and recruit new nursing team members, we will have one RN, 2 LPNs and a Patient Care Technician assigned to each group of ten inpatients. This increases the time our nursing team spends at the bedside providing quality care, and decreases patient wait times for care.

Rehabilitation

At AdventHealth Waterman, we provide comprehensive oncology rehabilitation care. Physical therapy, occupational therapy and speech therapy are available to patients throughout the continuum of their treatment including acute care, inpatient rehab, home care and outpatient rehabilitation. The services provided include functional mobility training, patient and caregiver education, strengthening, reduction of soft tissue restrictions, lymphedema therapy, vestibular and balance training, and speech and swallow therapy exercises.

Nutritional care

At AdventHealth Waterman, the Clinical Nutrition Services team provides individualized Medical Nutrition Therapy (MNT) to patients in inpatient, rehab, and outpatient settings. The services provided include screening patients for nutritional risk, assessing nutritional needs, implementing an individualized MNT plan based on the patient's needs and care goals, providing nutrition education, and monitoring and revising MNT plans as needed. Cancer patients receive a complimentary outpatient visit with our Registered Dietitian. This helps cancer patients maintain and improve their nutrition to allow them to complete their cancer treatment in a timely manner.

Financial Counseling

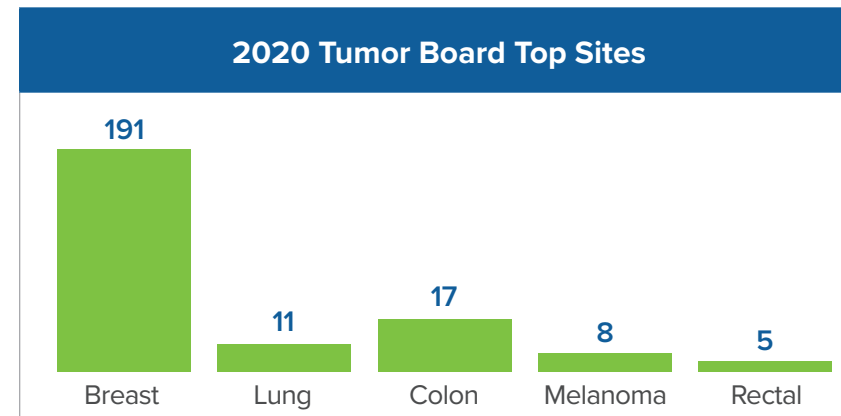
AdventHealth Cancer Institute Waterman strives to reduce the stress and worry of the financial burden a cancer diagnosis often causes. Our specialized team assists patients, and their caregivers, with insurance authorizations, financial counseling support to address financial barriers to care, and with access to resources for assistance with transportation needs, insurance coverage, and disability and personal insurance paperwork.

Tumor Board

A multi-disciplinary approach is often used to determine the most effective individualized treatment plans for our patients. Each week a team of our specialty physicians meets to review and discuss individual cases before recommending the best course of treatment. During these weekly tumor board meetings, each case is also reviewed against the Clinical Practice Guidelines established by the National Comprehensive Cancer Network (NCCN), an alliance of leading cancer centers. These guidelines offer additional clinical evidence and support to ensure our patients are receiving the best treatment options. The Cancer Institute also holds a weekly Breast Case Conference which is a tumor board dedicated to review of breast cancer cases.

Cases Reviewed at Tumor Board

At AdventHealth Waterman, patients with complex cancer conditions are supported by a team of oncologists and other cancer specialists who collaborate at the Tumor Board to determine the best possible treatment plan for each patient. In 2020, 261 cancer cases were presented at Tumor Board. Breast cancer, the most diagnosed cancer, was the most frequently reviewed type of cancer at Tumor Boards.



Source: AdventHealth Cancer Institute Waterman Cancer Registry

Cancer Registry

Improving the survival and quality of life of our patients is our top priority. As part of our accreditation with the Commission on Cancer of the American College of Surgeons, AdventHealth Cancer Institute Waterman maintains a Cancer Registry. This information system allows us to track and compare our cancer outcomes and survival rates with other facilities across the country. The collective data helps us stay up to date on successful treatment trends and clinical trials, and guides us in designing programs to keep our community better educated about the importance of cancer screenings and prevention.

Cancer Registry Data: 2020

Total Cancer Patients Three-Year Trend: 2018 – 2020			
Year	2018	2019	2020
Patients	976	1209	1083

Source: AdventHealth Cancer Institute Waterman Cancer Registry



Primary Tumor Sites

Breast cancer was the most diagnosed cancer at AdventHealth Waterman in 2020, followed by respiratory and digestive cancers. Bone, connective and soft tissue cancers were the least frequently diagnosed.

Primary Site	Total Cases	Analytic	Non-Analytic
All Sites	1083	766	317
Oral Cavity	23	13	10
Lip	0	0	0
Tongue	6	2	4
Oropharynx	1	1	0
Hypopharynx	1	1	0
Other	15	9	6
Digestive System	155	106	49
Esophagus	11	7	6
Stomach	11	5	6
Colon	46	36	10
Rectum	28	17	11
Anus/Anal Canal	6	4	2
Liver	15	11	4
Pancreas	25	16	9
Other	13	10	3

Primary Site	Total Cases	Analytic	Non-Analytic
All Sites	1083	766	317
Respiratory System	163	118	45
Nasal/Sinus	1	1	0
Larynx	14	11	3
Other	3	3	0
Lung/Bronc-Small Cell	15	11	4
Lung/Bronc-Non Small Cell	99	76	23
Other Bronchus & Lung	31	16	15
Blood & Bone Marrow	70	21	49
Leukemia	37	9	28
Multiple Myeloma	18	11	7
Other	15	1	14
Bone	1	0	1
Connect/Soft Tissue	5	3	2

Primary Site	Total Cases	Analytic	Non-Analytic
All Sites	1083	766	317
Skin	37	27	10
Melanoma	36	26	10
Other	1	1	0
Breast	248	225	23
Female Genital	62	35	27
Cervix Uteri	6	4	2
Corpus Uteri	39	21	18
Ovary	11	6	5
Vulva	4	2	2
Other	2	2	0
Male Genital	111	54	57
Prostate	108	52	56
Testis	3	2	1
Other	0	0	0
Urinary System	92	73	19
Bladder	70	58	12
Kidney/Renal	20	14	6
Other	2	1	1

Primary Site	Total Cases	Analytic	Non-Analytic
All Sites	1083	766	317
Brain & CNS	46	38	8
Brain (Benign)	0	0	0
Brain (Malignant)	16	11	5
Other	30	27	3
Endocrine	6	4	2
Thyroid	3	2	1
Other	3	2	1
Lymphatic System	40	28	12
Hodgkin's Disease	3	2	1
Non-Hodgkin's	37	26	11
Unknown Primary	22	19	3
Other/III-Defined	2	2	0

Note: This report excludes cancer in-situ cervix cases, squamous and basal cell skin cases, and intraepithelial neoplasia cases.

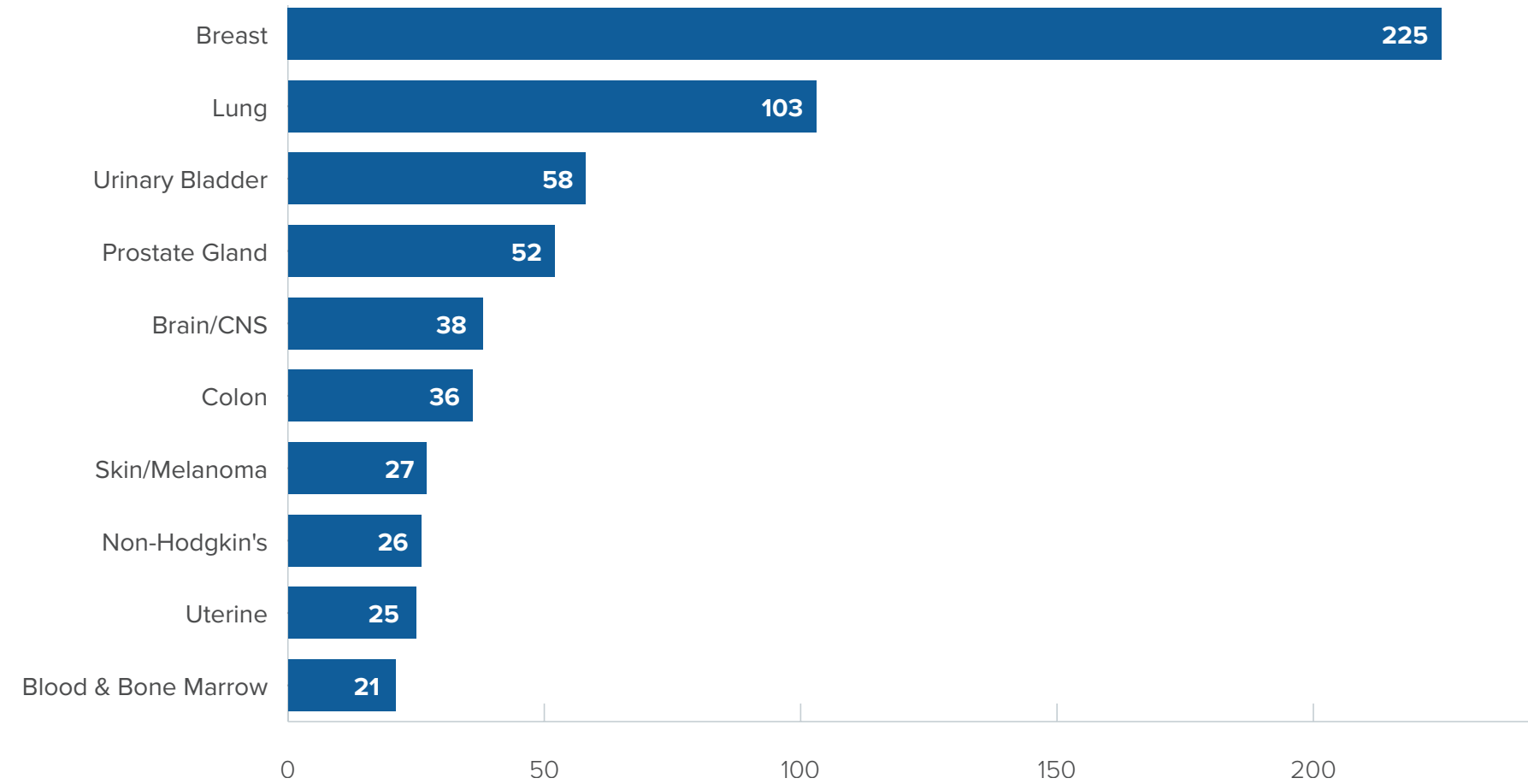
* Analytic: Patients who were diagnosed and/or received their first course of treatment at AdventHealth Cancer Institute Waterman.

** Non-analytic: Patients who were treated at AdventHealth Cancer Institute Waterman for subsequent treatment or for other conditions not related to first diagnosis/treatment.

Source: AdventHealth Cancer Institute Waterman Cancer Registry

Ten Most Commonly Diagnosed Cancers

In 2020, of the ten most diagnosed cancers at AdventHealth Waterman, breast, lung, and bladder cancers accounted for more than half of all cases.

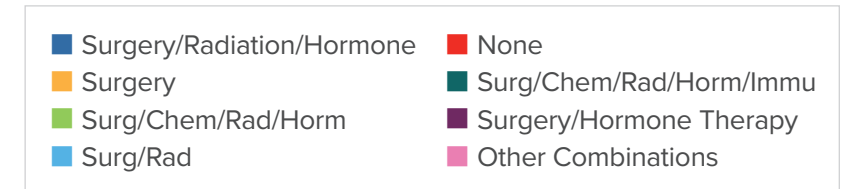
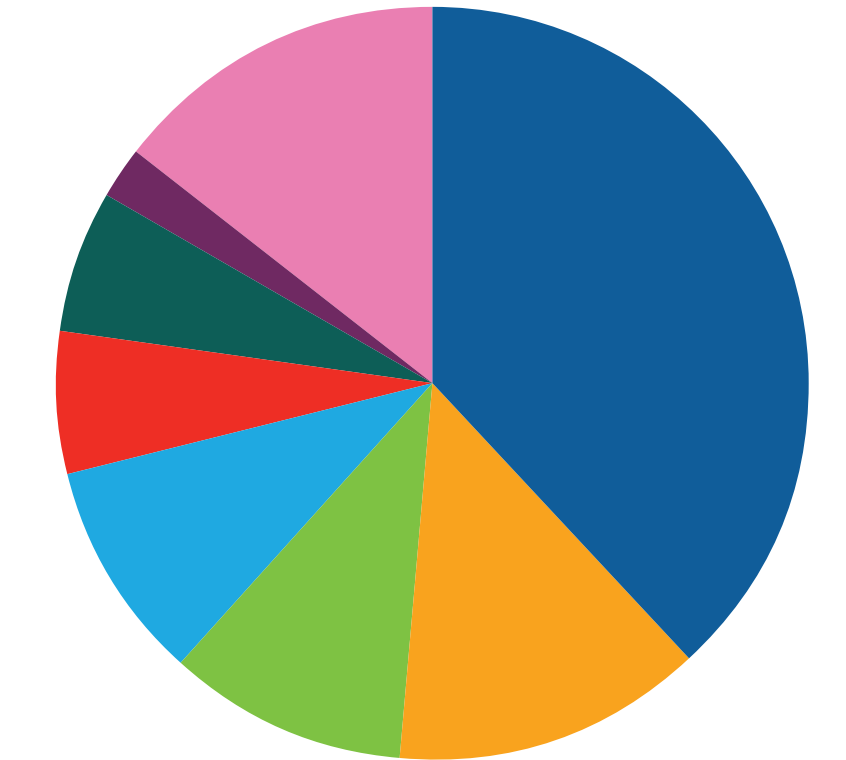


Source: AdventHealth Cancer Institute Waterman Cancer Registry

Breast Cancer Cases: Treatment Combinations

The most common forms of treatment for breast cancer patients at AdventHealth Waterman in 2020 were surgery, chemotherapy, hormone therapy and radiation therapy.

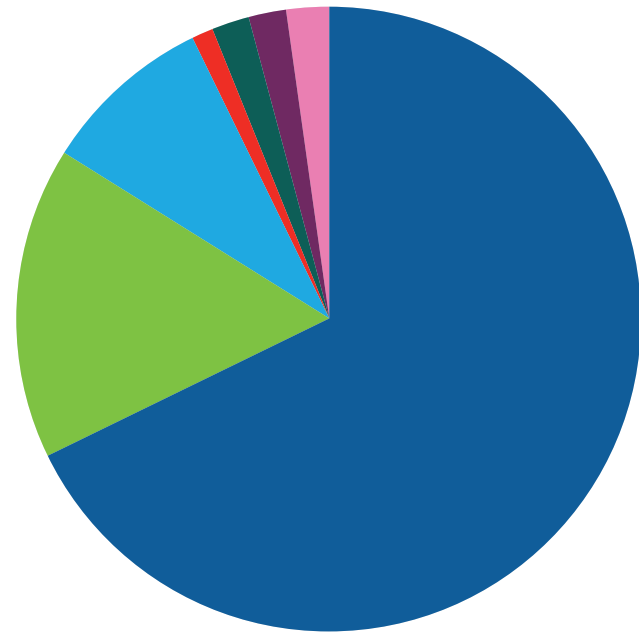
Rx Type	Number of Cases	Percent
Total Cases	225	100.00%
Surgery/Radiation/Horm	83	36.89%
Surgery	29	12.89%
Surg/Chemo/Rad/Horm	22	9.78%
Surgery/Radiation	21	9.33%
None	13	5.78%
Surg/Chemo/Rad/Horm/Immu	13	5.78%
Surgery/Hormone Therapy	11	4.89%
Other Combinations	33	14.67%



Most Common Forms of Treatment for Breast Cancer
Source: AdventHealth Cancer Institute Waterman Cancer Registry

Bladder Cancer Cases: Treatment Combinations

In 2020, 68 percent of patients with bladder cancer were treated with surgery at AdventHealth Waterman. Surgery combined with chemotherapy was the second most common form of treatment.

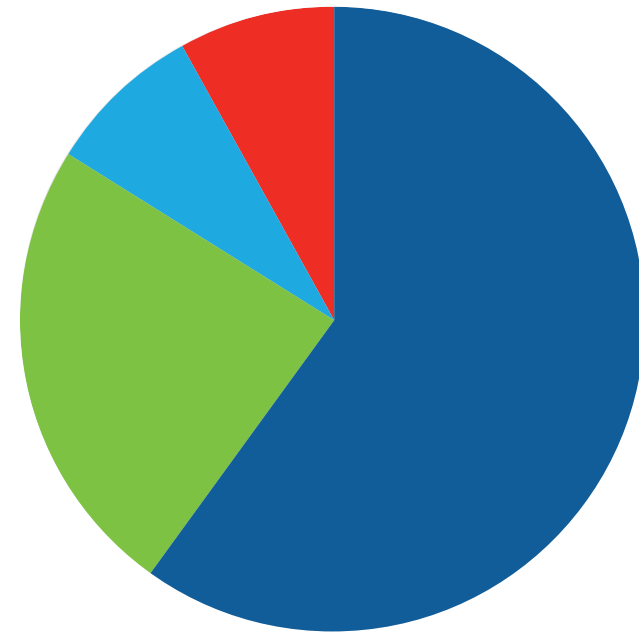


■ 67.86% Surgery	■ 1.79% Chemo/Rad
■ 16.07% Surg/Chemo	■ 1.79% Surg/Chemo/Rad
■ 8.93% None	■ 1.79% Surg/Rad
■ 1.79% Chemo	

Source: AdventHealth Cancer Institute Waterman Cancer Registry

Colon Cancer Cases: Treatment Combinations

In 2020, 60 percent of patients with colon cancer were treated with surgery at AdventHealth Cancer Institute Waterman. Surgery combined with chemotherapy was the second most common form of treatment.

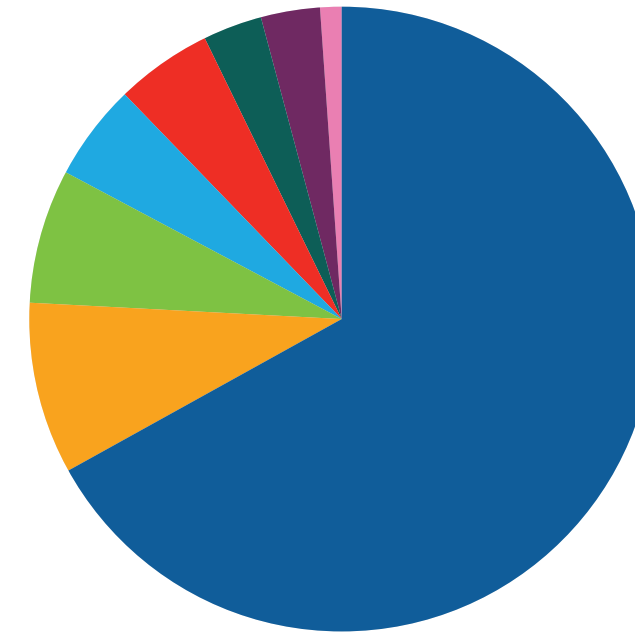


■ 59.46% Surgery	■ 8.11% Chemotherapy
■ 24.32% None	■ 8.11% Surg/Chemo

Source: AdventHealth Cancer Institute Waterman Cancer Registry

Lung Cancer Cases: Treatment Combinations

Radiation and/or chemotherapy and immunotherapy was used to treat half of all patients diagnosed with lung cancer at AdventHealth Cancer Institute Waterman in 2020.

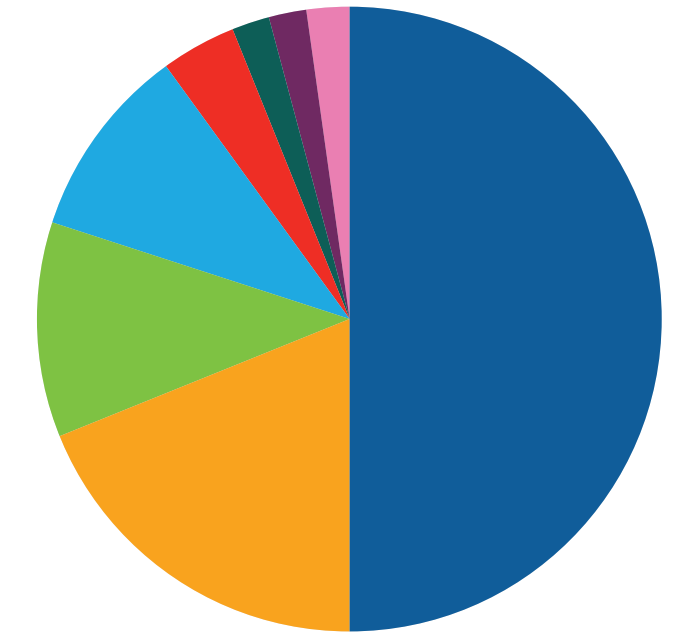


■ 67.33% None	■ 4.95% Chemotherapy
■ 8.91% Radiation	■ 2.97% Surgery
■ 6.93% Chemo/Immu	■ 2.97% Chem/Rad/Immu
■ 4.95% Chemo/Rad	■ 0.99% Immunotherapy

Note: Graph contains the top 8 treatment combinations for Lung
Source: AdventHealth Cancer Institute Waterman Cancer Registry

Prostate Cancer Cases: Treatment Combinations

Radiation was the most frequently used therapy to treat AdventHealth Waterman patients diagnosed with prostate cancer in 2020.



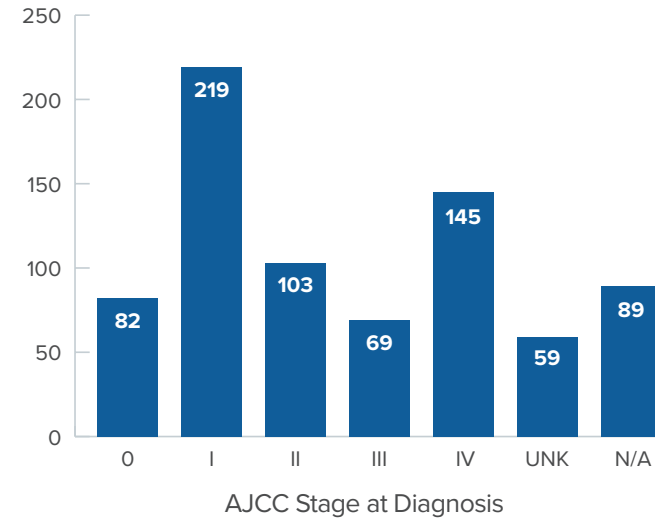
■ 50% None	■ 3.85% Rad/Horm
■ 19.23% Radiation	■ 1.92% Chemotherapy
■ 11.54% Hormone Therapy	■ 1.92% Chemo/Horm
■ 9.62% Surgery	■ 1.92% Surg/Chemo/Horm

Source: AdventHealth Cancer Institute Waterman Cancer Registry

Stage at Diagnosis

In 2020, most cancer patients seen at AdventHealth Waterman were diagnosed in the early stage (Stages 0-II). Often, when a cancer is diagnosed in an earlier stage, the cancer is more treatable. The stage in which the disease is detected often varies by cancer type.

Source: AdventHealth Cancer Institute Waterman Cancer Registry

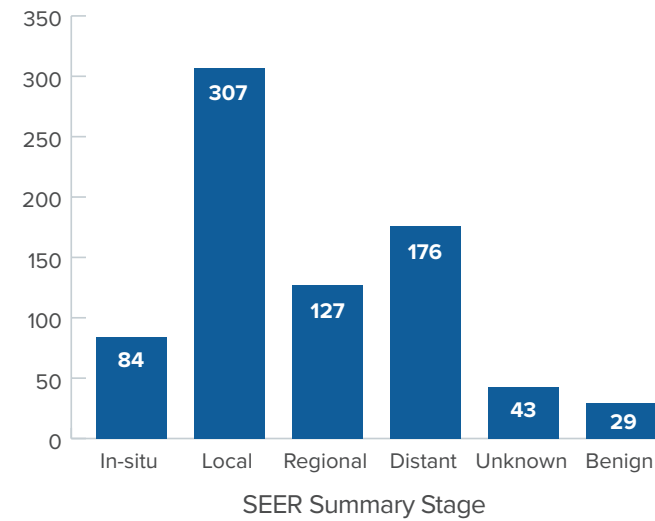


Stage	Cases	Percent
Total	766	100%
0	82	12%
I	219	30%
II	103	14%
III	69	10%
IV	145	20%
UNK	59	7%
N/A	89	7%

Summary Stage at Diagnosis

Of cancers diagnosed at AdventHealth Cancer Institute Waterman in 2020, 40.1 percent were discovered while the cancer was still localized to the area in which it originated. Of cancers diagnosed in 2020, 23 percent of patients were diagnosed after the cancer had spread to distant parts of the body.

In-situ: Abnormal cells present but have not spread
Local: Cancer limited to where it originated
Regional: Cancer that has spread to nearby tissue or body parts
Distant: Cancer that has spread to distant parts of the body

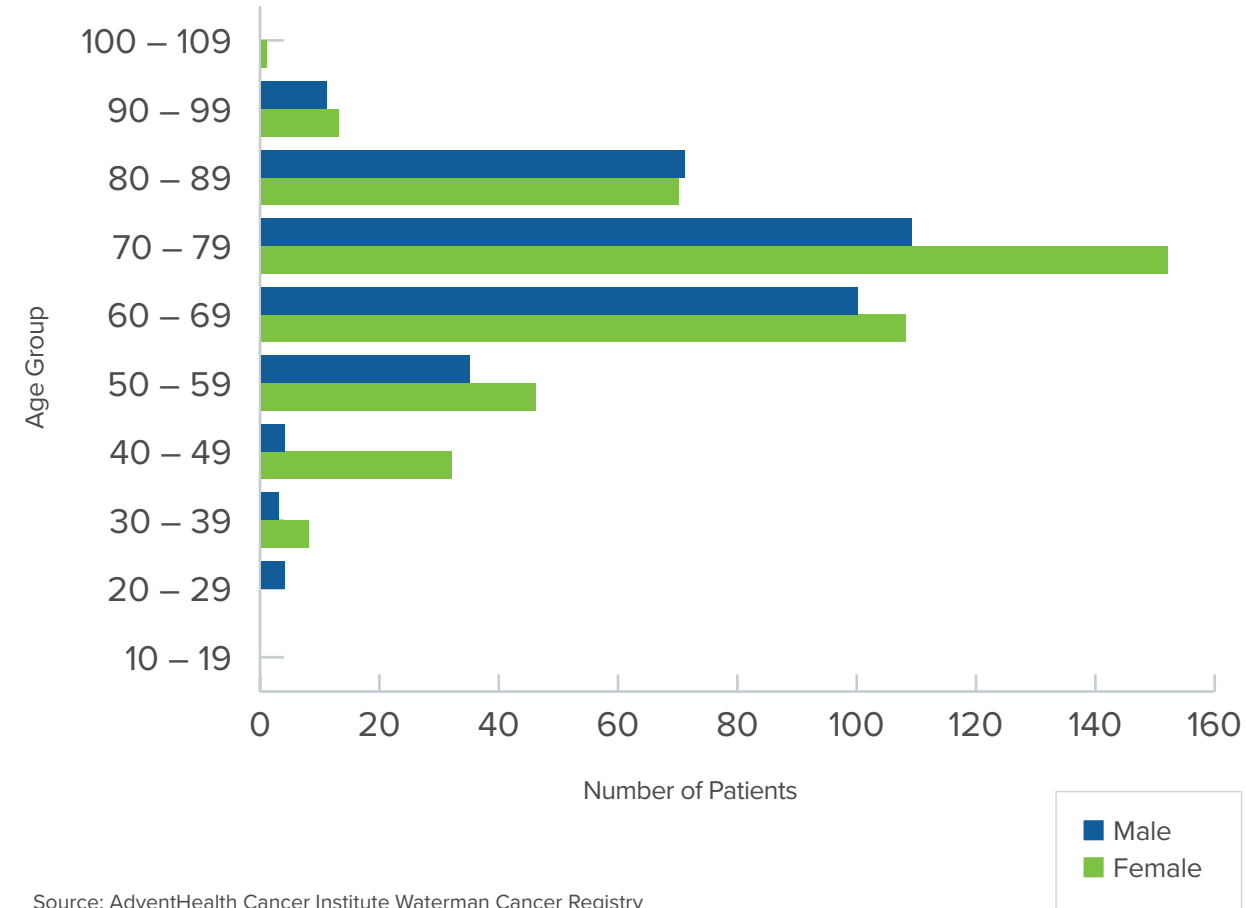


Stage	Cases	Percent
Total	766	100%
In-situ	84	9%
Local	307	40%
Regional	127	17%
Distant	176	23%
Unknown	43	6%
Benign	29	4%

Source: AdventHealth Cancer Institute Waterman Cancer Registry
 SEER: The Surveillance, Epidemiology, and End Results Program of the National Cancer Institute (NCI) is an authoritative source of information on cancer incidence and survival in the United States.

Age at Diagnosis

Cancer was most frequently diagnosed in patients age 70 to 79, followed by those 60 to 69 years of age.

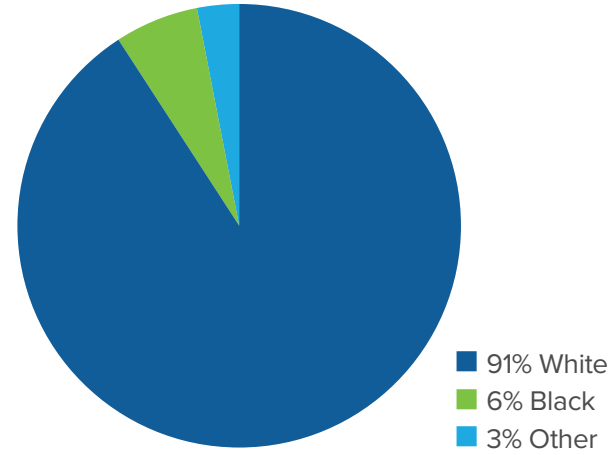


Source: AdventHealth Cancer Institute Waterman Cancer Registry



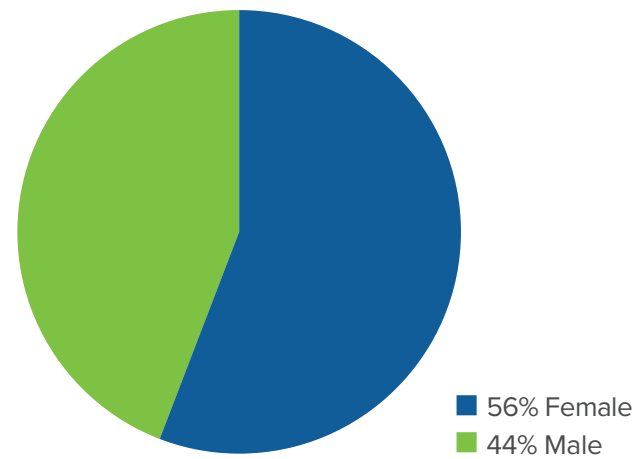
Age Range	Male	Female
Total	337	430
10 – 19	0	0
20 – 29	4	0
30 – 39	3	8
40 – 49	4	32
50 – 59	35	46
60 – 69	100	108
70 – 79	109	152
80 – 89	71	70
90 – 99	11	13
100 – 109	0	1

Diagnosis by Race



Diagnosis by Gender

Of the patients diagnosed with cancer in 2020 at AdventHealth Waterman, 56 percent were female.



Source: AdventHealth Cancer Institute Waterman Cancer Registry

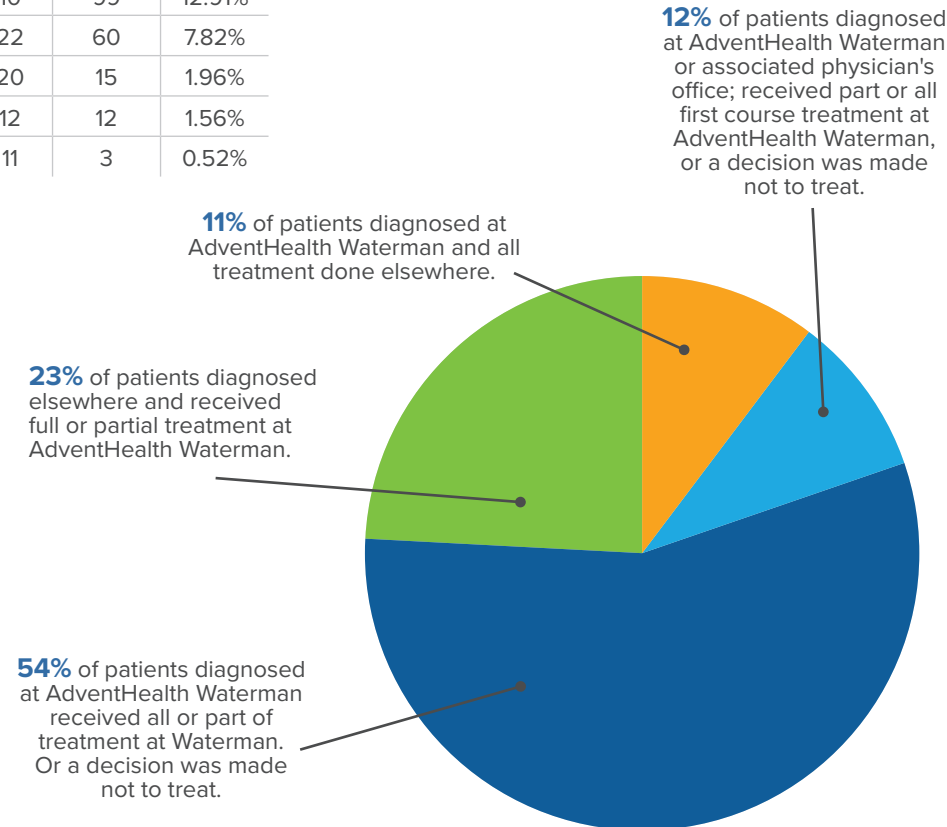
Diagnosis and Treatment Center

Fifty-four percent of cancer patients diagnosed at AdventHealth Waterman in 2020 received part or all of their treatment at Waterman. Eleven percent of patients diagnosed at AdventHealth Waterman received all their treatment elsewhere.

Class	Cases	Percent
Total	766	100%
14	275	40.02%
21	167	19.36%
00	83	9.98%
13	52	6.78%
10	99	12.91%
22	60	7.82%
20	15	1.96%
12	12	1.56%
11	3	0.52%

Class Distribution

- Class 11 – 14
- Class 20 – 22
- Class 00
- Class 10



Monitoring Quality Of Care

AdventHealth Waterman is committed to continuous process improvement to provide quality care to our patients. Each year, AdventHealth Cancer Institute Waterman conducts studies to monitor quality of care and identify any areas for performance improvement.

In 2021, the Cancer Institute evaluated its adherence to evidence-based guidelines for patients with colon cancer. Per National Comprehensive Cancer Network (NCCN) guidelines, patients with colon cancer are to have the stage of their cancer identified by a CT scan of the chest, abdomen, and pelvis prior to surgery. Accuracy of cancer staging is crucial for ensuring appropriate treatment is provided.

The Tumor Registry team conducted a medical record review of colon cancer cases from 2019 and 2020 to determine Waterman's rate of compliance with this national guideline. The medical record review revealed that in 2019 there were 53 eligible colon cancer patients and 49 (92%) of those patients received a chest, abdomen, and pelvis CT scan prior to surgery. In 2020, there were 33 eligible colon cancer patients and 28 (85%) received the recommended CT scan prior to surgery. Based on the results of this study, AdventHealth Cancer Institute Waterman is compliant with the evidence-based guideline.

Return To Screening Initiative

In 2021, AdventHealth Cancer Institute Waterman participated in the American College of Surgeons' Commission on Cancer Return to Screening Quality Improvement/Clinical Study.

Cancer screening is an important component of cancer care. Because of the COVID-19 pandemic, cancer screening was substantially disrupted due to closing of screening facilities, limited staffing of screening facilities, lack of patient awareness that screening is safe when precautions are taken, backlogs causing

scheduling delays, and traditional in person screening events being curtailed due to safety concerns. The primary goal of this initiative was to improve cancer screening rates back to pre-pandemic levels.

Since breast cancer cases are the largest number of cases seen at AdventHealth Cancer Institute Waterman, we set a goal to increase our 2021 screening mammogram rate beyond our pre-pandemic rate.

We implemented the following interventions and followed American Cancer Society guidelines for screening:

- Sent monthly direct mail reminders from Waterman's Imaging Department to patients due for mammograms, and monthly reminders to the physicians of patients with screening tests due
- Provided ongoing one-on-one patient education about mammography screening by the Breast Navigator
- Distributed mammography screening guidelines to members of the community through various educational events throughout the year
- Implemented social media posts to encourage mammography screening
- Sent mammogram direct mail letters to women in the community who were turning 40 years of age (monthly)
- Referred women to the Florida Breast and Cervical Cancer Early Detection Program to improve access and reduce barriers to care for uninsured women needing screening mammograms

Our post-intervention monthly screening target for 2021 was 815 mammograms per month. Our monthly average in 2021 was 677, falling short of the target. However, we increased by 568 screenings from April to November 2021 over the same time period in 2020.

Although we did not meet the goal of 815 screenings per month in 2021, our interventions have been successful in helping increase screenings over 2020. We will continue to implement these interventions into the future to increase breast cancer screening rates.

Patient Support

Psychosocial Services

While the challenges of a cancer diagnosis are overwhelming, the oncology social worker at AdventHealth Cancer Institute Waterman is specially trained to help patients obtain the physical and emotional support they need. A comprehensive network of psychosocial services includes adjustment counseling, support groups, financial and transportation assistance, home care and hospice referrals, and connections to community resources.

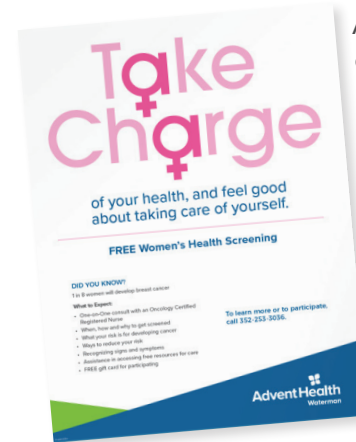
Support Groups

- All Cancers Group
- Breast Cancer Group
- Gynecological Cancer Group
- Men's Coffee Group

In 2021, the oncology social worker provided 1,119 interventions to assist patients with psychosocial emergencies and needs.

Patient Support Data	
Number of patients who had psychosocial distress screenings	277
Number of patients assisted by social worker	190
Number of patients who received transportation assistance	28
Number of patients who received financial assistance	31
Number of support groups held	39
Number of support group participants	119

Community Outreach



AdventHealth Cancer Institute Waterman's annual community outreach activities exemplify our Whole Person Care philosophy and demonstrate our commitment to fostering a healthy community. Some of the activities we provided, in person and virtually, in 2021 included:

- Community Health Screening and Prevention Events
- Individual Screening Assessments
- Community Lectures
- Social Media Events

AdventHealth Cancer Institute Waterman participated in the Great American Smoke Out - Lung Cancer Prevention with events on November 5 and 19, 2021 at Valencia Grove Senior Community 62+ in Eustis and the Martin Luther King Community Building in Mount Dora.

The American Cancer Society distributed educational materials on lung cancer prevention and screening. Educational materials on smoking cessation were provided by the Central Florida Advanced Health Education Center.

There were 11 participants at the Nov 5 event and 10 at the Nov 19 event. Waterman's Lung Navigator conducted risk profile assessments on 21 participants.

Outcomes:

- No participants were eligible for a Low Dose CT screening
- 1 person signed up for smoking cessation classes
- 5 participants registered to attend Waterman's Facebook Live educational lecture
- 2 participants registered for Tools to Quit classes offered at AdventHealth Waterman and/or the Mount Dora Library

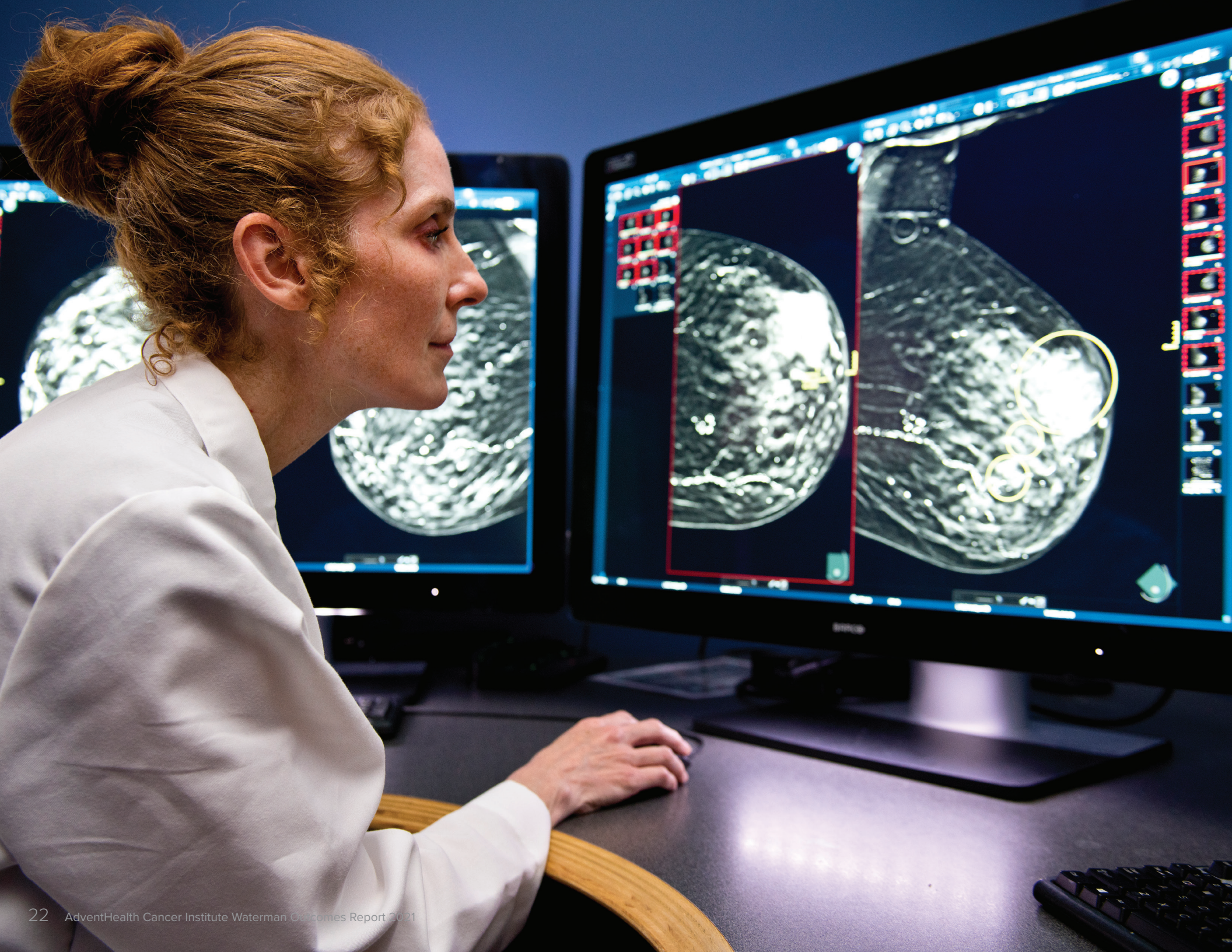


AdventHealth Waterman hosted a Facebook Live Lung Cancer Webinar on November 17, 2021. Twelve participants attended the live event, and there were over 50,000 views on the video posted virtually with 44 reactions during the month of November.

Prevention and education programs provided for breast cancer included:



Program	Date	Location	Number of Participants	Outcomes
Breast Cancer Screening Event (for minority women)	Apr 30	Valencia Grove Eustis	16	<ul style="list-style-type: none"> • 5 women were overdue for mammograms. • 2 were referred to the Florida Breast and Cervical Cancer Early Detection Program for financial assistance. • 1 woman had benign breast biopsies with recommended follow up diagnostic mammography and ultrasound in 6 months
Physician Lecture – Breast screening education	Sept 22	Tavares Chamber of Commerce	38	1 appointment with breast physician requested
Pink on Parade 5k – Breast Health Education & Awareness	Oct 10	Virtual	114	
Breast Cancer Awareness Rally Golf Tournament – Fundraiser to benefit the Waterman Foundation's Screening Mammography Fund (for uninsured women)	Oct 16	Water Oak Country Club Estates	200	Raised \$4,784 for screening mammograms, diagnostic mammograms and transportation
Pinking Ceremony - Physician Lecture – Breast Cancer Education	Oct 20	Taped panel interview aired on Waterman Facebook page	529 views 11 shares 24 reactions	
Community Screening & Prevention Event – Seniors age 62+	Nov 5	Valencia Grove – Eustis	15	6 women were overdue for mammograms
Community Screening & Prevention Event – Coordinated with Lake Cares Food Pantry (for minority and low-income women)	Nov 12	Bate Avenue Resource Center – Mount Dora	10	3 women were overdue for mammograms with 1 eligible for assistance from the Florida Breast and Cervical Cancer Early Detection Program



American Cancer Society Partnership



AdventHealth Cancer Institute Waterman's partnership with the American Cancer Society (ACS) provides additional support to cancer patients in Lake County. In 2021, AdventHealth Cancer Institute Waterman was a \$10,000 corporate sponsor of the ACS Pink Polo event to raise breast cancer awareness in the community.

Through sponsorships and other partnerships, the American Cancer Society provides cancer resources to Lake County residents. Some of these include:

Patient Services:

- Cancer Resource Library (educational information/brochures)
- Transportation
- Lodging
- Reach to Recovery (breast cancer support)
- Personal Health Manager
- National Cancer Information Center
- Health Insurance Assistance Service
- Cancer Survivors Network
- Clinical Trial Assistance
- Survivorship Center

Caregiver Services:

- Caregiver Resource Guide and Videos

Florida Breast And Cervical Cancer Early Detection Program Partnership

AdventHealth Cancer Institute Waterman partners with the Florida Department of Health's Florida Breast and Cervical Cancer Early Detection Program to provide eligible uninsured women age 50-65 in Lake County with free mammograms and diagnostic imaging. In 2021, our Breast Navigator screened 114 uninsured women for eligibility and provided application assistance for mammogram screening, resulting in 45 women receiving free mammograms through this program. Breast cancer was detected in one of these women who received assistance with obtaining Medicaid and timely cancer treatment.

The remaining 69 women who were not eligible for this program were provided alternate financial assistance resources, including low cost \$30 mammograms offered by AdventHealth during the month of October.

Philanthropy

Thanks to the generosity of our donor partners, the AdventHealth Waterman Foundation raises thousands of dollars annually that help fund valuable services to improve the health of our community.

In 2021, the Foundation raised more than \$120,555 to support Cancer Care Services (including more than \$25,000 raised by other local groups and organizations) with an additional \$87,675 raised through events and promotion.

The challenges of the COVID-19 pandemic continued in 2021 with the suspension of in-person events through most of the year which impacted the Foundation's fundraising efforts. However, the Foundation continued to engage the community in support of cancer services through a virtual 5k and in person golf tournament.

Proceeds from these events are used to promote breast cancer awareness, and provide financial and educational support for early detection and screening. Proceeds will also help fund new cancer treatment technology to bring renewed hope for those going through cancer treatment.

In 2021, the Foundation received a \$5,000 external grant from the Florida Breast Cancer Foundation to assist underserved breast cancer patients with their living expenses. These grant dollars were used to provide financial assistance to seven breast cancer patients for living expenses and transportation expenses to and from treatment.

The Foundation also received an external grant of \$2,000 from the Florida Society of Clinical Oncology (FLASCO) Foundation for assistance with cancer patients' unmet needs. Transportation to and from treatment continued to be a significant need for some cancer patients who were unable to have other means of transportation due to lack of financial resources and/or access. During the grant period of March 1 through October 15, 2021, nine patients were provided with assistance for transportation to and from their treatments.

2021 Contributions and Distributions

Contributions

- Raised by Foundation for cancer services, screening mammograms and cancer benevolent fund \$183,227
- Raised by partner organizations
 - Designated for screening mammograms \$19,540
 - Designated for cancer benevolent fund \$5,462

Distributions

- Cancer Benevolent Fund \$13,000
- Donated by Foundation for screening mammograms for uninsured and underserved women \$987

Financial contributions directly impact the lives of those battling cancer right here in Lake County and assist our expert clinical team by providing necessary cutting-edge technology and personalized care to enhance our clinical outcomes, reduce cost of care, and lead to more cancer cures. We hope you will consider a contribution and leave a legacy of hope and healing through the AdventHealth Waterman Foundation. To learn how you can help, please contact AdventHealth Waterman Foundation at 352-253-3270 or via email to WAT.Foundation@AdventHealth.com.

2021 Cancer Committee Members



Borys Mascarenhas, MD
Comprehensive Cancer Committee Chair
Medical Director of Cancer Clinical Quality
Breast Program Medical Director
Surgical Oncology



Ahmed Al-Hazzouri, MD
Clinical Research Coordinator
Medical Oncology



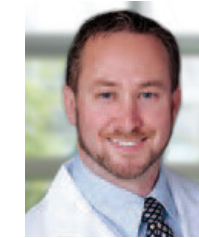
Gary Allen, MD
Thoracic Surgery



Ross Edmundson, MD
Chief Medical Officer



Patricia Geraghty, MD
Radiology



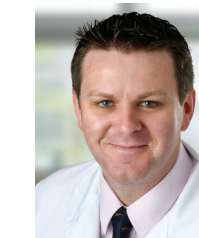
Jason Gerboc, MD
Urology



Ajit Hansalia, MD
Palliative Care



Anudh Jain, MD
Radiation Oncology



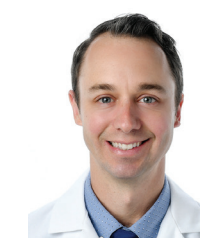
Justin Kelly, MD
Colorectal Surgery



Mohsin Malik, MD
American College of Surgeons' Commission on Cancer Clinical Liaison Physician
Medical Oncology



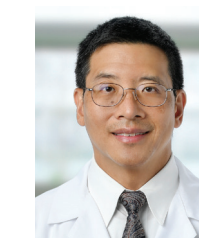
Peter Marzek, MD
Reconstructive Surgery



Ryan Schroeder, DO
Pulmonology



Jason Smith, DO
Surgery



Justin Wu, MD
Quality Improvement Coordinator
Radiation Oncology



Deborah Zeagler, MD
Pathology

Non-Physician Members

Cara Anderson, Process Improvement
Alex Antonijevic, Genetic Counseling
Eileen Bascombe, Cancer Navigation
Kathy Diaz, Florida Health Department
Renee Furnas, Community Outreach
Jeri Hendershot, Oncology Nursing
Steffanie Huffines, Marketing
Michelle Maes, Rehabilitation
Leslie Maxwell, Cancer Institute Director
Janet Moore, Cancer Navigation
Monica Owens, Nutritional Services
Heather Palladino, Palliative Care
Shannon Ross, Radiation Oncology
Latanya Ruiz, Oncology Social Work
Tammy Semelsberger, American Cancer Society
Marjorie Sneed-Owens, Cancer Registry
Alison Sutton, Cancer Registry
Sabine Vatel, Pastoral Care
Charissa Wynn, Cancer Navigation

Coordinators

Ahmed Al-Hazzouri, MD, Clinical Research
Latanya Ruiz, Survivorship Program and Psychosocial Services
Jason Smith, DO, Cancer Conference
Marjorie Sneed-Owens, Cancer Registry Quality
Justin Wu, MD, Quality Improvement

Alternate Members

Venus Berganzo, Process Improvement
Matthew Biagioli, MD, Radiation Oncology
Richard Bosshardt, MD, Reconstructive Surgery
Mariel Delos Santos, Rehabilitation
Michael Fountain, DO, Urology
Ralph Gousse, MD, Medical Oncology
Julia Hamilton, Performance Improvement
Maen Hussein, MD, Medical Oncology
Christopher Kechriotis, MD, Pathology
Christopher Keeler, DO, Surgery
Leslie Matthews, Marketing
Kevan Stewart, MD, Radiology
Dan Tran, MD, Surgery
Anita Young, AdventHealth Waterman Vice President

